



neaco

Clearview Balconies





Contents

Page

Clearview Traditional Balconies **5-6**

Clearview Modular Balconies **7**

Balcony Floor Decking **8-9**

Clearview Juliet Balconies **10-11**

Bespoke Solutions **13**

End-to-End Service **13**

Fire Safety **14**

Supporting Sustainable Building **15**

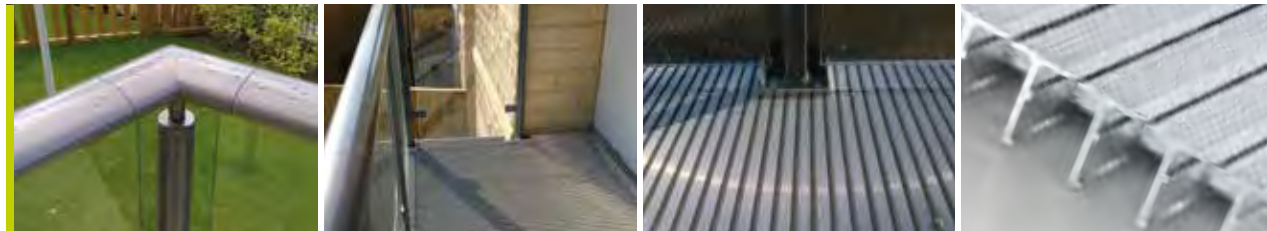



Image courtesy of Castle Retirement Living

- | All-in-one **modular** solutions manufactured off-site to the **highest standards**
- | All balustrade components connected with **hidden fixings** to achieve a smooth appearance
- | **Comply** with all required standards and regulations
- | Glass panels provide a **clear view out** and maximise the benefits of natural light
- | Rust-free, maintenance-free finishes maintain the **quality of the aesthetics**
- | **Quick and easy** to install, by site teams or Neaco's dedicated fitters
- | Aluminium has a design life of **60-100 years**
- | Supports **sustainable building** with minimal time and energy spent on site

Clearview Traditional Balconies

THE ULTIMATE IN STYLE, PERFORMANCE AND DURABILITY





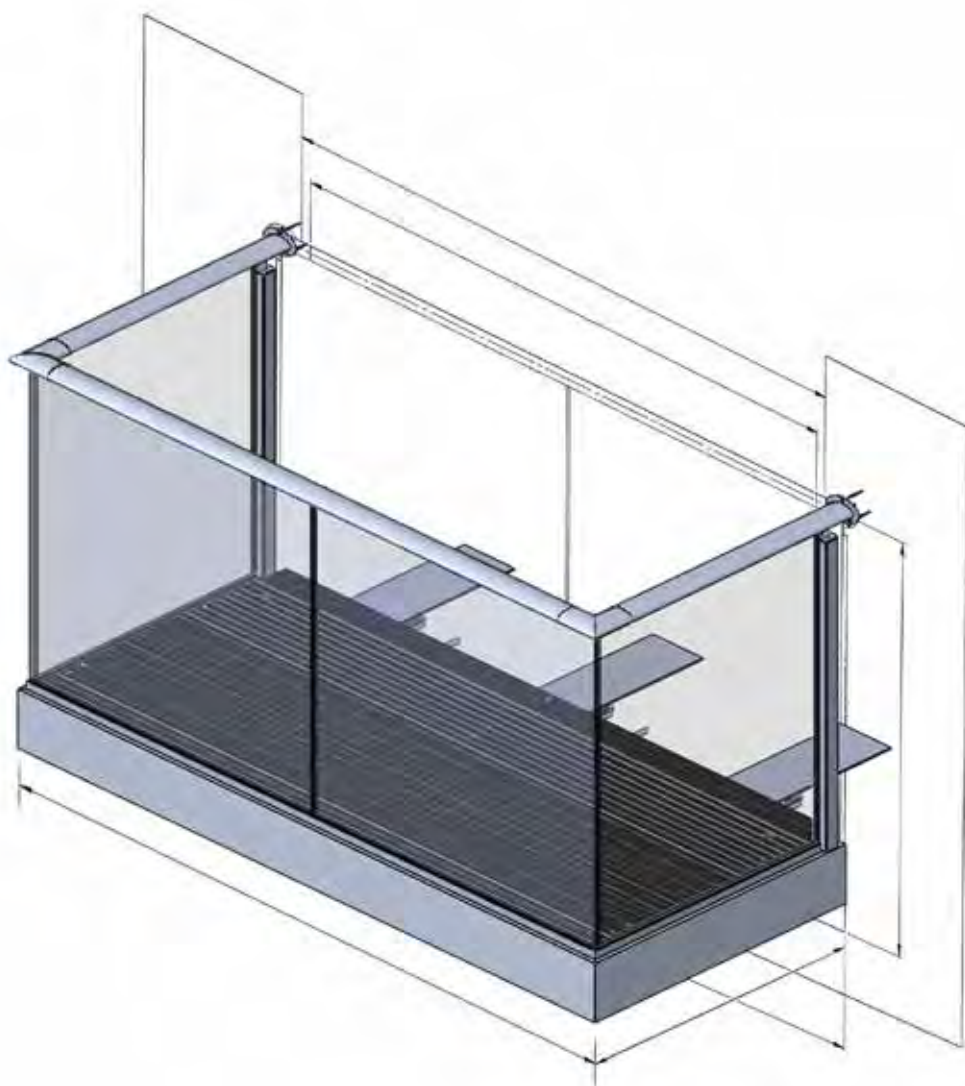
Neaco offers a wide range of modular walk-on balconies combining smooth, maintenance-free toprails and stanchions with A1 Fire Rated aluminium decking and clear or tinted glass panels which maximise solar penetration.

With strict quality control processes applied at our manufacturing facility, all components are precision engineered to uniformly high standards and assembled ready for quick and easy installation on site.

- | Toughened or laminated glass balustrade panels
- | Neatdek aluminium decking
- | 90mm x 45mm oval handrail
- | Square profile aluminium stanchions
- | Clamping system to fix to protruding steelwork arms
- | Optional soffit panels

Clearview Modular Balconies

STANDARD SPECIFICATION



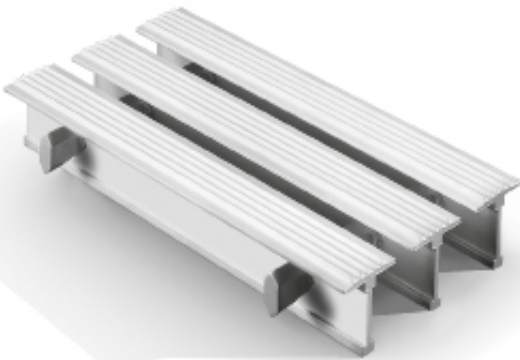
We provide four Neatdek balcony decking options based on an innovative T-bar profile. The systems are precision engineered in A1 Fire Rated aluminium which is fully compliant with The Building (Amendment) Regulations 2018 and amended Approved Document B and Approved Document 7 Guidance. These modular systems offer excellent spanning capabilities which reduce the need for structural supports in build projects. As an alternative to our acclaimed Neatdek grille systems, we also provide aluminium planking (see opposite) as an easy-fit solution, often used as a like-for-like replacement for traditional timber and composite decking. Our decking options can span upto 2100mm (general duty). For specific spanning capabilities please contact sales@neaco.co.uk or call 01653 695721.

Balcony Floor Decking

NEATDEK

Available with 5mm gaps between bars, our original open grille system provides a generous contact area in flooring application, yet allows water and other liquids to drain safely away. Available with a longitudinally ribbed surface.

Surface contact area: 74% - 84%



NEATDEK WITH INSERTS*

The Neatdek T-Bar profile is available with the option of vinyl inserts between bars. This provides a closed-gap solution which offers excellent privacy and negates the need for soffits.

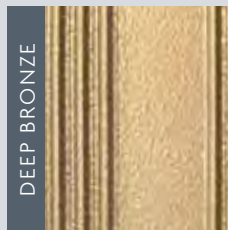
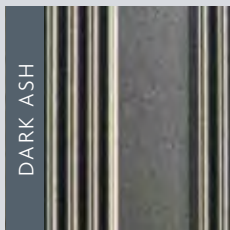
Surface contact area: 100%



* please note that the use of inserts and/or colour coating will affect the Fire Rating of our Neatdek decking.

Colour Options*

Our systems are available with a durable coating with curing agents selected for their excellent hard wearing properties, UV resistance and weathering. Available in a choice of standard colours, they provide a more natural and traditional aesthetic where required.



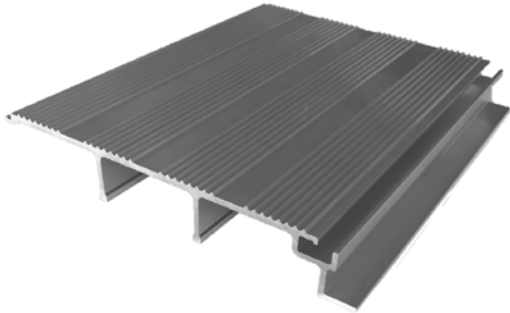
Balcony decking is quick and easy to install with Neaco fixing clips or directly onto steelwork or pedestals.



NEATLOK

Neatlok is an inter-locking closed planking system with a ribbed surface for anti-slip performance.

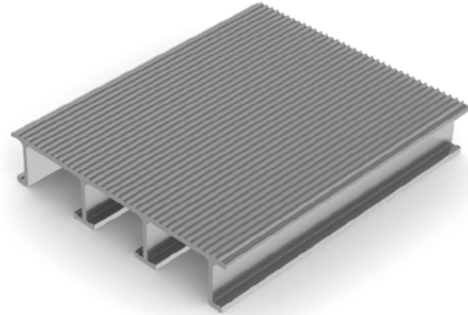
Surface contact area: 100%



NEATWALK

Neatwalk is a planking system that is fitted with 5mm drainage gaps and provides a non-combustible alternative to traditional timber and composite decking.

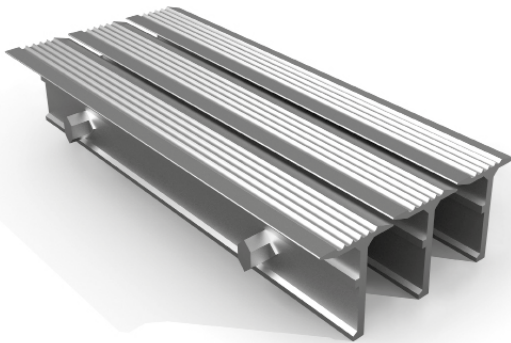
Surface contact area: 96%



NEATDEK 188

Developed from the original T-bar profile of our Neatdek system, Neatdek 188 features a concealed-gap surface with discreet drainage providing safe footing in any type of footwear. The decking provides total privacy by restricting the views from above and below.

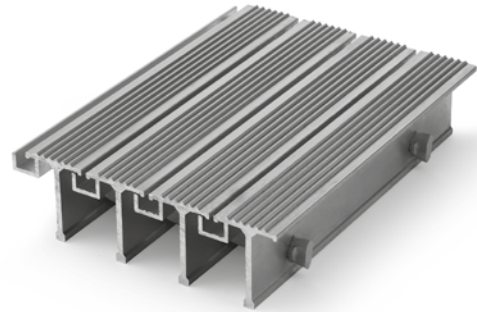
Surface contact area: 100%



NEATDEK HW

An adaptation of the original Neatdek T-bar design, Neatdek HW is a closed-grille system which offers a generous contact area in flooring applications, yet allows water and other liquids to drain discreetly away via a series of integrated channels between bars.

Surface contact area: 90%



DURABLE COATING OPTIONS - GENERAL FEATURES

This thermosetting powder contains polyester resins cured with fit curing agents specially selected for their hard-wearing properties and superior resistance to UV radiation and outdoor weathering. These products are part of the category named HIGH DURABLE and were created for coating aluminium components used in architecture. They have all the necessary requirements for approval under Qualicoat Class 2 Category 1.

APPLICATION

Due to its special content the product is particularly suggested for exterior coating.

As with any coated product, the coatings will be damaged if subjected to the impact of a heavy/sharp object falling or scraping on the surface.

Why choose Neatdek?

- Precision-engineered for exceptional slip resistance
- A1 Fire Rated and fully compliant with Building Regulations*
- Structural efficiency provides superior spanning capability
- A wide range of drainage options to suit different needs
- Made-to-measure sizes minimise labour on site
- Aluminium Alloy 6082 T4 & T6 with a design life of 60+ years

Clearview Juliet Balconies

Providing contemporary minimalist style, our attractive Juliet balcony designs include 10mm thick toughened safety glass and powder coated aluminium top rails for a rust-free finish, ensuring a hard-wearing application that can handle the most demanding environments.



Glass panels can be clear or tinted with the additional option of applied graphics. The panels are secured by an ovular top rail with circular stem brackets providing subtle support at the base. Alternatively, an ovular rail can provide the support at the base.

Design Options







Bespoke Solutions

In addition to our standard modular balconies, our design experts can provide a huge range of bespoke balcony solutions to meet any design concept or installation requirement, from curved glass panels and railed balustrade to privacy films. We also offer alternative materials such as stainless steel balustrade.

End-to-End Service

With a comprehensive customer support team, Neaco is able to provide an end-to-end service from initial design consultation and drawings to site survey and installation. We provide full technical support throughout, backed by decades of experience in supplying high quality, fully compliant architectural solutions to all sectors and built environments.

The Highest Standards in Fire Safety

- | Decking has Euroclass A1 Fire Rating - the highest achievable score for non-combustibility.
- | Fully compliant with the Building (Amendment) Regulations SI 2018/1230.
- | Fully tested to comply with Approved Document B, 'Fire Safety.'
- | Aluminium is Rated 0 (the highest possible) in the categories of Non-Combustibility, Ignitibility, Fire Propagation and Surface Spread of Flame in BS 476 Fire Test Series.

Neaco modular balconies support sustainable building, represent a more environmentally friendly alternative to solutions fabricated on-site and could help improve a development's BREEAM rating. We manufacture from aluminium alloys with a lifespan of up to 60-100 years and recyclability of up to 100%.

How Our Modular Balconies Support Sustainable Building

- | Minimal installation time on-site reduces energy use.
- | Single delivery on-site means lower carbon emissions.
- | Less waste is created as off-cuts are collected at our factory and recycled.
- | Manufacturing entirely at our factory removes the need for hot works (such as welding) on site.

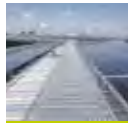
Supporting Sustainable Building



Other products in the **Neaco Architectural Range**



Spectrum
BALUSTRADE



Techdek
DECKING & WALKWAYS



Techdek
SOLAR SHADING & CLADDING



The Bathing Range
ADAPTIVE BATHROOM FACILITIES



Registered Office:

Norton Grove Industrial Estate, Norton, Malton, Yorkshire YO17 9HQ England

T: 01653 695721 **E:** sales@neaco.co.uk

www.neaco.co.uk

Registered England 1065772. VAT NO. 168 2239 51.